

P2P (Groove)

(Ray Ozzie) 가.
(Collaboration) . 가 IBM
3 .
P2P 21 .
P2P

1.

(Collaboration) .
,
PC , e-
(Lotus Notes)' .

1989 7,500 가
/

가 가
' (Groove)' . 가
가 가
가 .

3 가
.
가
가

CEO " 가 가
" "

5100 (collaborative
computing) 가 (.NET)

(GlaxoSmithKline)

(Ford Calhoun) CIO

가

"

"

가

P2P (peer -to -peer)

P2P

가

(Napster)

가

. 1970

(PLATO)

가

가 e

P2P

가

가

. P2P

2.

Groove Networks

P2P

1997

Groove

Groove

가

21

Groove

P2P

가

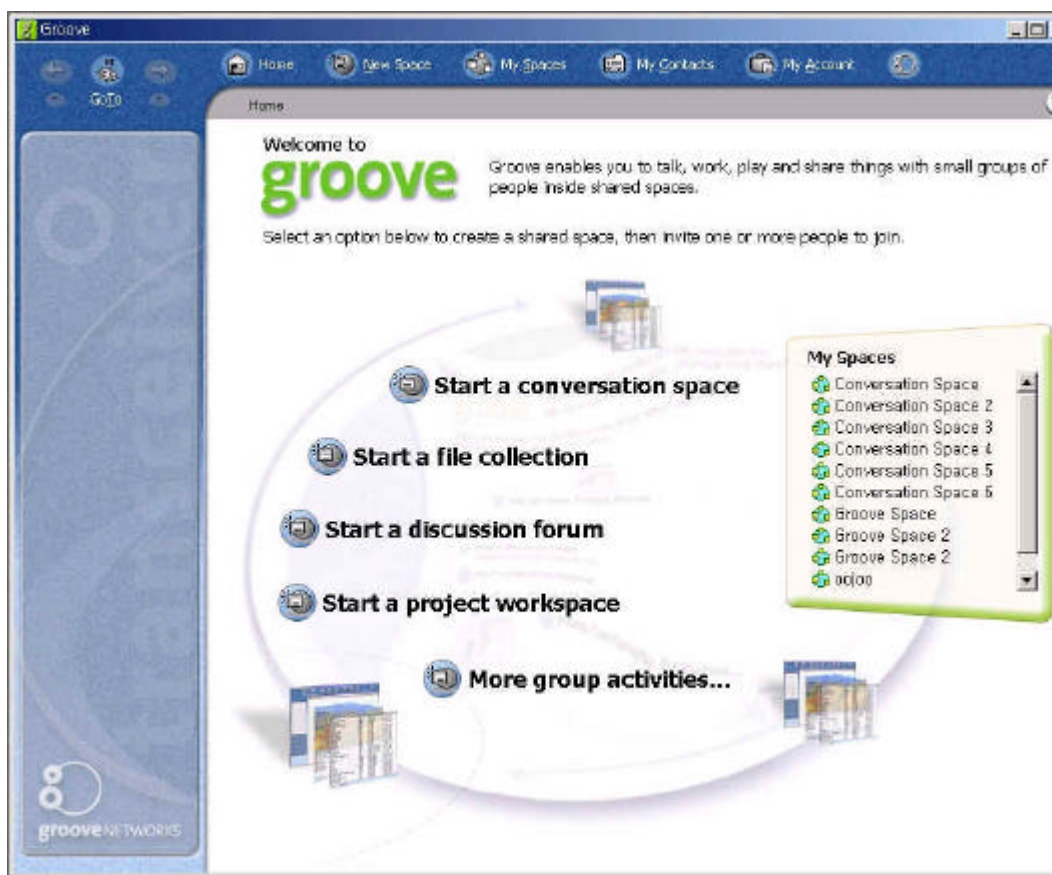
가가 가

21

. (: groove_01_Frontpage.jpg)

‘ My Spaces ’

가



P2P

가

가 .

P2P

PC

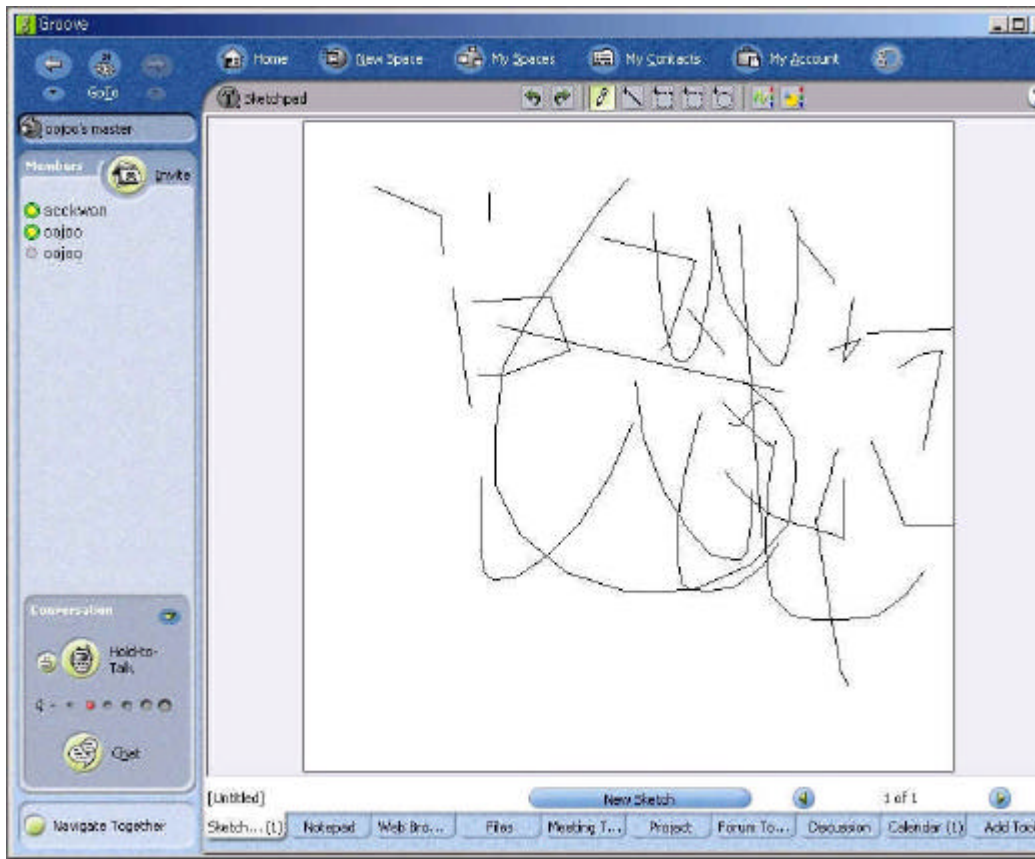
.

가

가

.

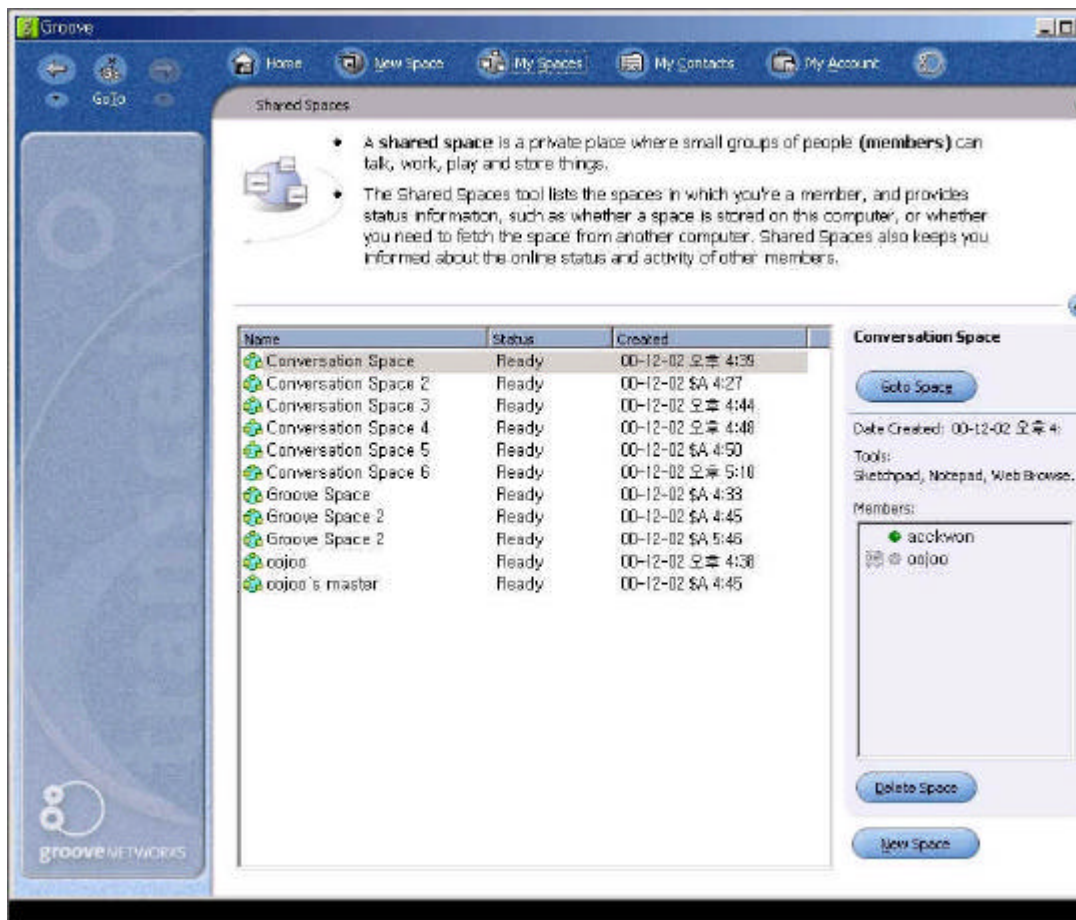
.. (: groove_04_Sketchboard.jpg)



‘Members’

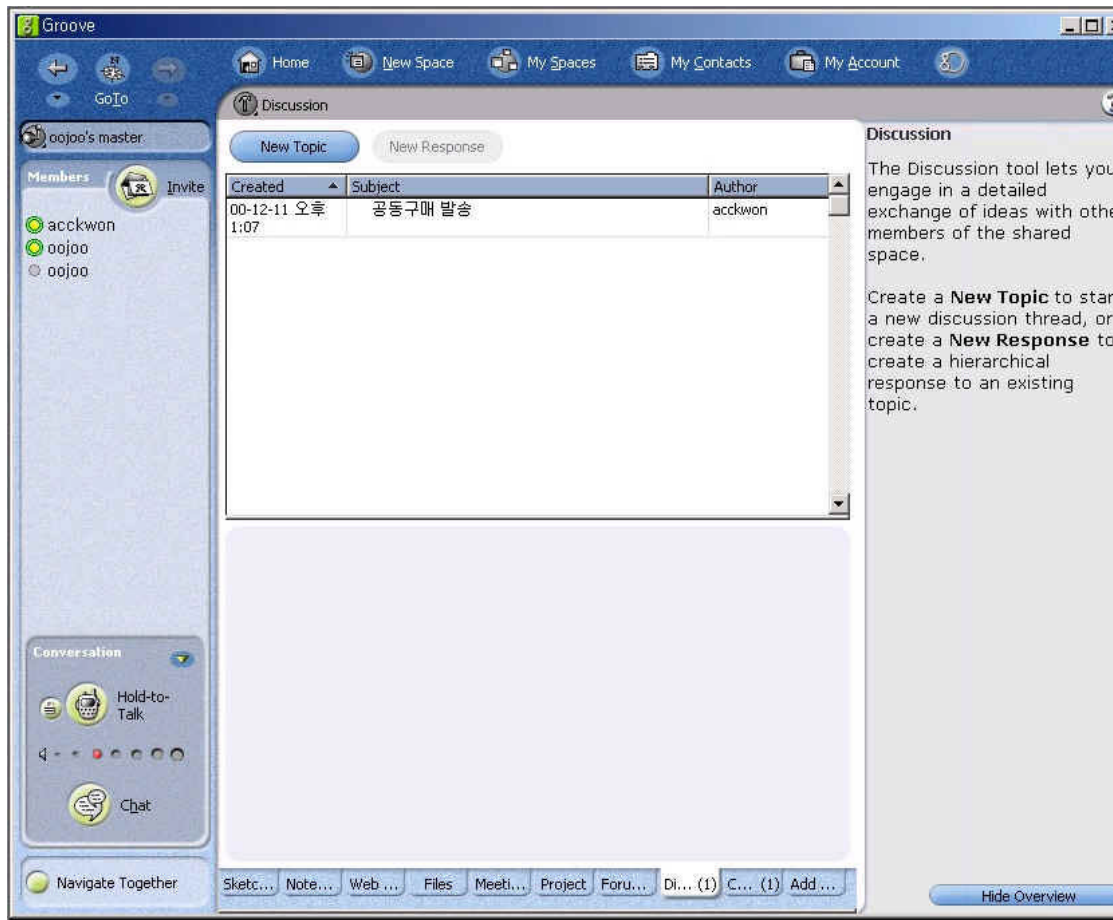
가

.. (: groove_02_Sharespace.jpg)



PC P2P 가

. . (: groove_06_BBS.jpg)



. 가

.
.(Forum
.)

가

가

가

(95, 98)

가 56Kbps

가

가

.

.

,

,

.

.

.

가

e-

. AP

가

가

.

가

.

.

.

.

.

가

.

3.

.

e-

가

.

.

가

가

.

(

,

49)

가

.

.

.

가

.

.

. AOL

center)

(command

. 200

97 (Groove Networks Inc.) . 95 IBM
35 가 3 4 1.0

"

"

가
" 가

가

(:

groove_Eng_Demo_0x.jpg



Home

New Space

My Spaces

My Contacts

My Account

grooveNETWORKS

Design

Name	Size	Modified
04535Y pneumatic.CAD	226 KB	01/13/01...
04535Y stresstest.CAD	783 KB	01/8/01...
04535Y structure.CAD	132 KB	12/24/00...

Name	Size	Modified
00535Y structure.CAD	352 KB	01/11/01...
00535Y components.CAD	339 KB	01/04/01...
00535Y Bill of Materials	252 KB	11/28/99...

Design (4)

Email

Discussion

Exchange

Intranet

Add Tool

Bob Collins: 9:20 AM The modification is to the striker device used to latch the assembly to the wheel.

Lisa Wong: 9:22 AM The 2000 component had 6 parts and 2 assembly processes. We've reduced the number of parts using a single striker plate made of aluminum.

Paul Warren: 9:25 AM The component weight reduction by using aluminum is 10 grams, and all of the stress tests meet specifications.

Maria Dunn: 9:26 AM This looks great. What does the latest BOM look like and how does it compare to the 2000 model BOM?

Bob Collins: 9:29 AM Let's add the analysis tool and get the data to make a comparison.

TMV Designs

Members

Bob Collins

Maria Dunn

Paul Warren

Lisa Wong

Hold-to-Talk

Lock

Chat

Navigate Together

Bob DE

Maria PM

Paul SE

Lisa ME

Video

Home

New Space

My Spaces

My Contacts

My Account

grooveNETWORKS

Analysis

Name	Size	Modified
04535Y pneumatic.CAD	226 KB	01/13/01 8:29 AM
04535Y stresstest.ERP	783 KB	01/8/01 6:12 PM
00535Y structure.CAD	352 KB	01/04/01 11:01 AM
00535Y bomrev1.ERP	339 KB	12/01/00 5:14 PM

Get Record

Update Record

Design

Analysis (4)

Email

Discussion

Exchange

Intranet

Add Tool

TMV Designs

Members

Bob Collins

Maria Dunn

Paul Warren

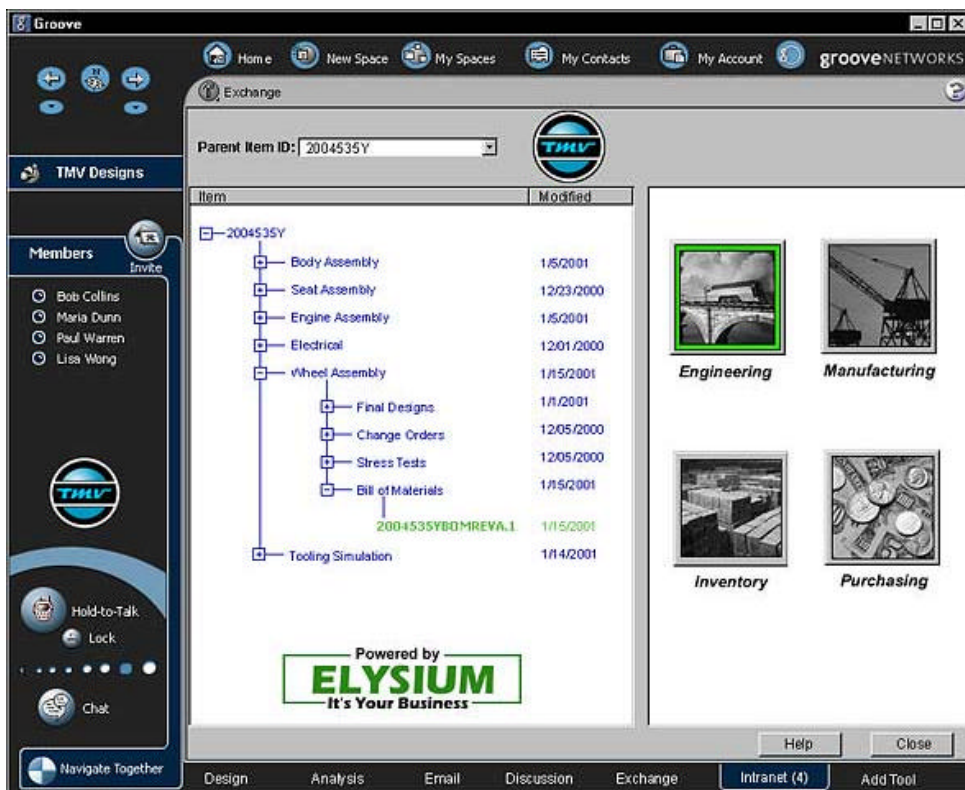
Lisa Wong

Hold-to-Talk

Lock

Chat

Navigate Together



groove_Financial_Demo_0x.jpg)

The screenshot shows the Groove Financial Demo interface. The top navigation bar includes links for Home, New Space, My Spaces, My Contacts, My Account, and grooveNETWORKS. The left sidebar contains sections for Capital Investments, Capital Account, and Members (listing Dave Pardo, Maria Sienez, Louis Sienez, and Tom Webb). The main content area is titled 'News' and displays a table of headlines with columns for Headlines, Date, and Source. Below the table, there is a section for 'US Tech Stocks Tumble' with a detailed article. The bottom navigation bar includes links for News (2), Portfolio Planning, Tax Planning, Research, C.I. Online, and Add Tool.

Headlines	Date	Source
US Tech Stocks Tumble	1/21/00 11:38 AM	currency.com
ELite Sees Big 1st Quarter Loss	1/21/00 11:28 AM	ustech.com
US GDP Revised Lower	1/21/00 10:21 AM	currency.com
Europe Still in the Red	1/21/00 10:04 AM	worldfinance.com
Tokyo Takes a Thrashing	1/21/00 9:24 AM	worldfinance.com
US Treasury Bonds Fall	1/21/00 9:03 AM	currency.com
Threat to VoiceTech Buy	1/21/00 8:53 AM	ustech.com

Get Headlines from:

- ☐ buynow.com
- ☐ cashflow.com
- ☒ currency.com
- ☐ usbonds.com
- ☒ ustech.com

Refresh

US Tech Stocks Tumble

NEW YORK - U.S. technology stocks fell at Friday's open as investors digested announcements from Gate-Packard and Hewlettway that both computer hardware makers' earnings would fall short of expectations.

At 9:40 a.m. ET, the Nasdaq composite index slid 27.14 to 2,613.43. The Dow Jones industrial average dipped 43.10 to 10,566.55, while the S&P 500 shed 3.35 to 1,323.47.

Wholesale prices were unchanged in December, according to the U.S. Labor Department. But excluding food and energy, the "core" producer price index rose 0.3 percent, which came in above Wall Street forecasts. Separately, the Commerce Department announced a 0.1 percent increase in December retail

The screenshot shows the Groove Financial Demo interface, specifically the Portfolio Planning section. The top navigation bar is the same as the previous screenshot. The left sidebar is also the same. The main content area is titled 'Portfolio Planning' and features a 'Portfolio Watch' section with a line graph showing 'Value (\$US)' over time. Below the graph, there is a 'Portfolio Detail' table listing various stocks and their performance. To the right of the graph, there is a 'Portfolio Planning Chat' section with a conversation between Dave Pardo and Maria Sienez. The bottom navigation bar includes links for News, Portfolio Planning (2), Tax Planning, Research, C.I. Online, and Add Tool.

Portfolio Watch

Value (\$US)

84000
83000
82000
81000
80000
79000
78000
77000
76000
75000

9/7/00 9/6/00 9/5/00 9/4/00 9/3/00 9/2/00 9/1/00 9/30/00 9/29/00 9/28/00 9/27/00 9/26/00 9/25/00 9/24/00 9/23/00 9/22/00 9/21/00 9/20/00 9/19/00 9/18/00 9/17/00 9/16/00 9/15/00 9/14/00 9/13/00 9/12/00 9/11/00 9/10/00 9/9/00 9/8/00 9/7/00

Portfolio Planning Chat

Dave Pardo 9:44 AM
I recommend we take some steps to diversify your portfolio. Given current market fluctuations, I feel that you are too heavily weighted on tech stocks.

Maria Sienez 9:46 AM
OK, but how should I diversify?

Dave Pardo 9:46 AM
Let's balance you out with some textile stocks.

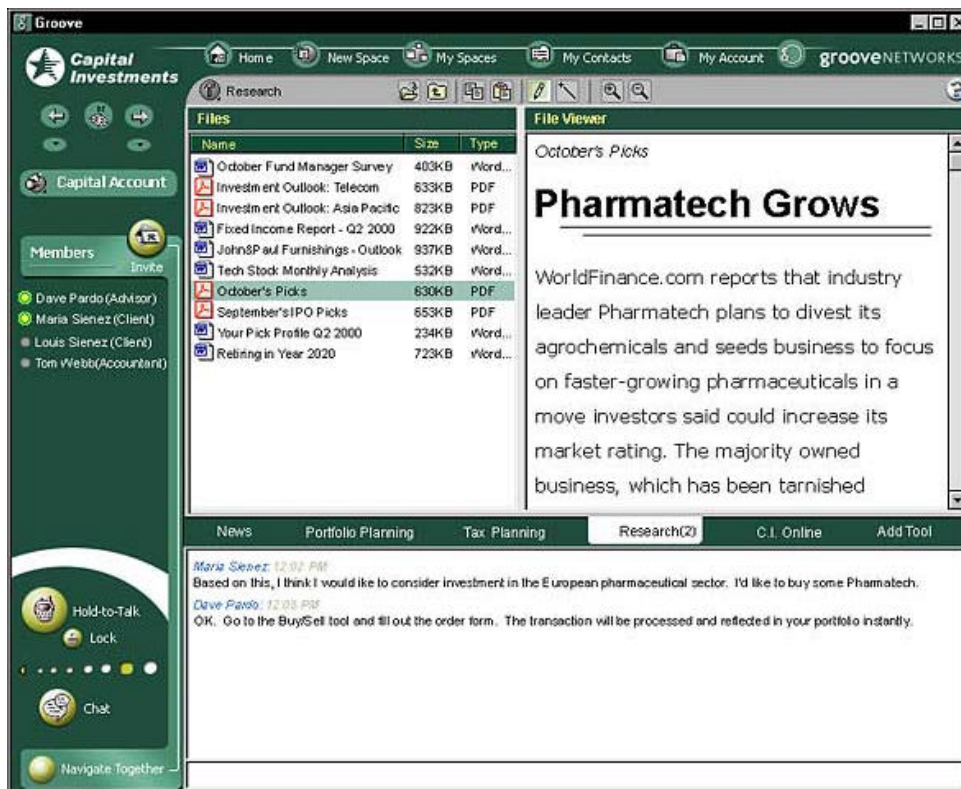
Maria Sienez 9:46 AM
Before we make any decisions, is there any specific research/analysis I should read?

... ATK 22.75 -1.125 ... ESO 23.5625 -0.832 ...

Refresh Edit

Portfolio Detail

Symbol	Date/Time	Price	Change	Open	High	Low	Volume
CS	1/22/00 2:02 PM	19.125	-1.1875	20	20.4375	18.6875	1119400
CCO	1/22/00 2:07 PM	52.9375	-0.75	52.5625	54.5	51.9375	35073000
ELL	1/22/00 2:07 PM	23.5625	-0.0625	23.375	24.125	23.0625	14289200
GD	1/22/00 2:02 PM	49.4375	-1.3125	50	50.0625	48.875	15782300
BMO	1/22/00 2:02 PM	99.9375	+1.4375	98.5	100.8125	98.3125	4350100
LU	1/22/00 2:02 PM	17.3125	-0.25	17.25	17.5625	16.375	26447100
RCL	1/22/00 2:07 PM	22.75	-1.125	23.625	24.0625	22.0625	40246800



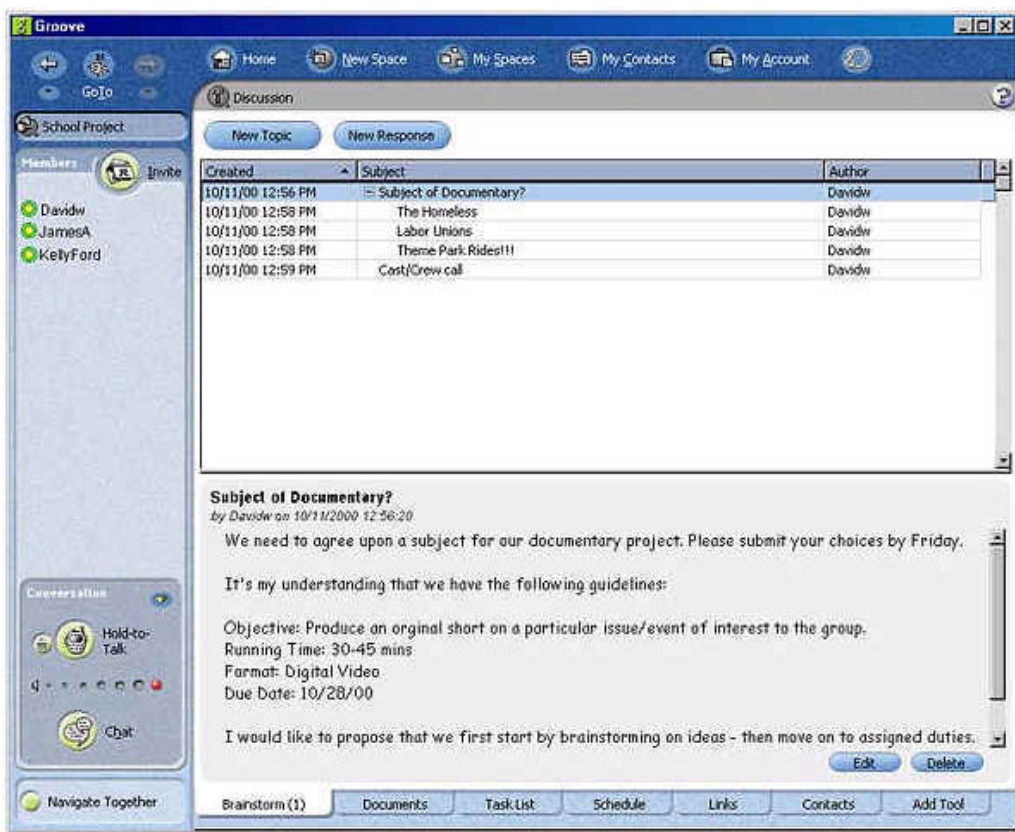
(John Poindexter)

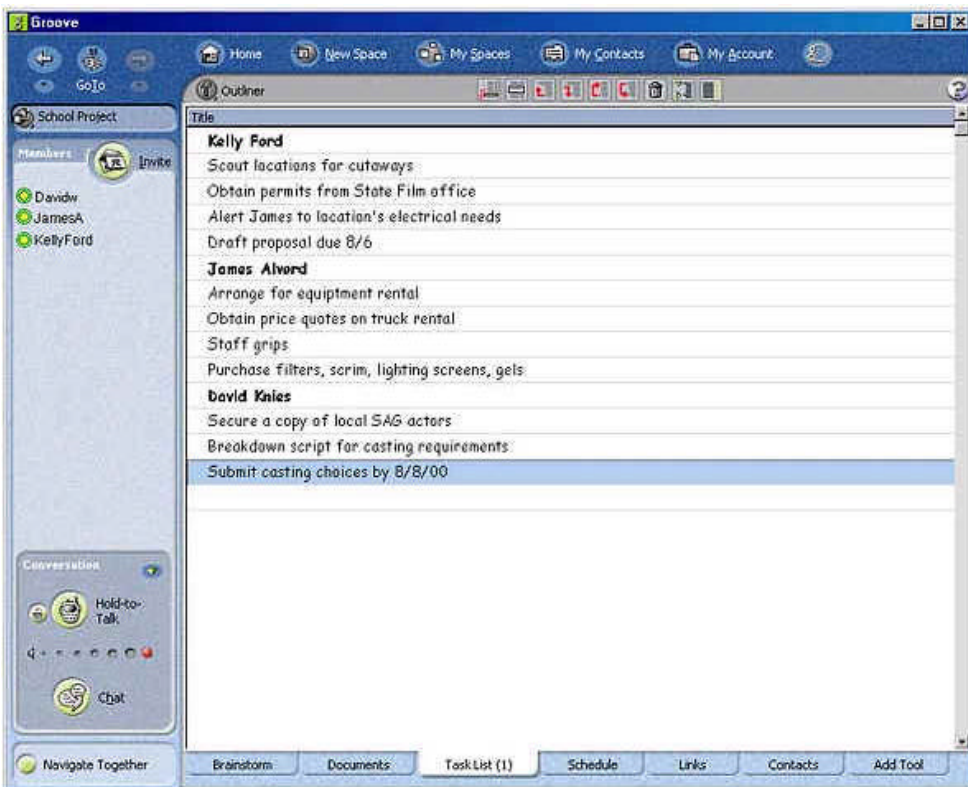
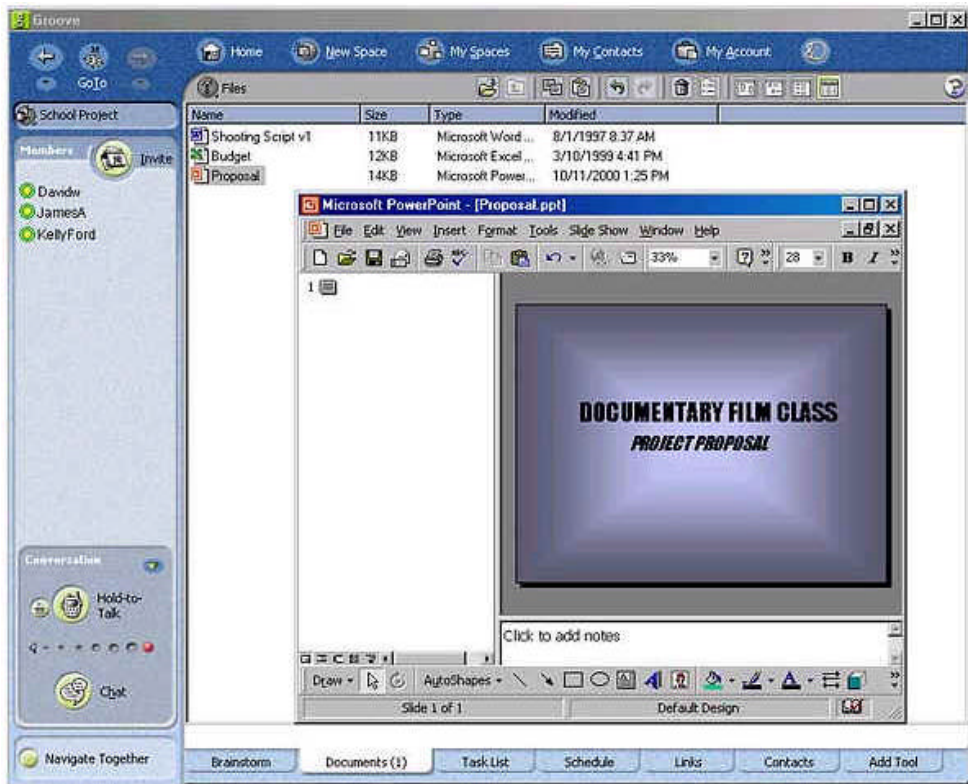
가
가

가

(:

groove_Team_Demo_0x.jpg)





Groove

Home New Space My Spaces My Contacts My Account

GoTo

School Project

Members: David, JamesA, KellyFord

Calendar

Add Entry Details Delete View by Today

October 2000

Sunday	Monday	Tuesday	Wednesday	Thursday	Friday	Saturday
October 1	2 Proposal Due	3	4	5	6	7
8	9	10	11 9:00 AM Kelly location scouting	12	13	14
15	16	17 9:00 AM Kelly location scouting	18	19	20	21
22	23 9:00 AM Kelly location scouting	24	25	26	27	28
29	30	31 November 1	2	3	4	5
6	7	8	9	10	11	12

Conversation: Hold-to-Talk, Chat

Navigate Together

Brainstorm Documents Task List Schedule (1) Links Contacts Add Tool

Groove

Home New Space My Spaces My Contacts My Account


GoTo

School Project


Members: David, JamesA, KellyFord

Web Browser

http://www.state.ma.us/film/fee-free/fee-free.htm



Massachusetts Fee-Free Locations



Massachusetts has more than 100 state-owned facilities available to qualified filmmakers at no charge

LOCATIONS

- Beaches
- Boats
- Farms
- Forests and Parks
- Historic Sites
- Hospitals
- Islands
- Marshes and Wetlands
- Mountains
- Quarries and

Massachusetts' Fee-Free Locations Program provides filmmakers with a tremendous incentive to film in the Bay State. State-owned facilities are available to qualified filmmakers at no-charge and may be used for office and set space. This program substantially lowers your below-the-line cost. For certain properties, you would be responsible for payment of utilities and any other unforeseen costs.

During the filming of *The Crucible*, Twentieth Century Fox utilized [Danvers State Hospital](#) for office space, props and carpentry shops, and warehousing. Other productions have used state facilities as locations and soundstages.

The Commonwealth's long history provides filmmakers with four centuries of diverse architecture that can only be found in Massachusetts. Throughout the Commonwealth, Victorian, Gothic, and

Done

Brainstorm Documents Task List Schedule Links (1) Contacts Add Tool

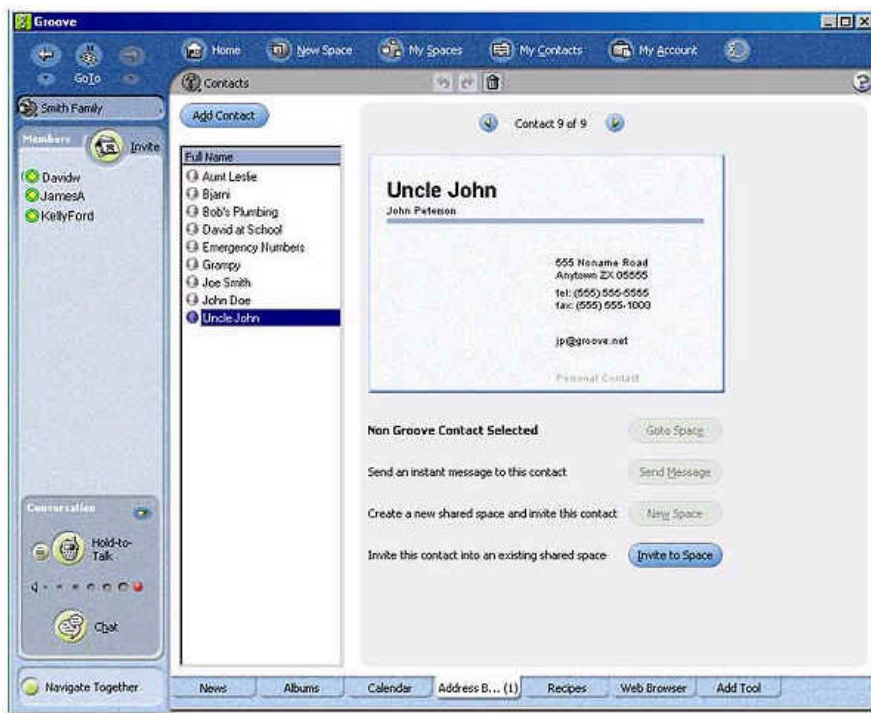
“

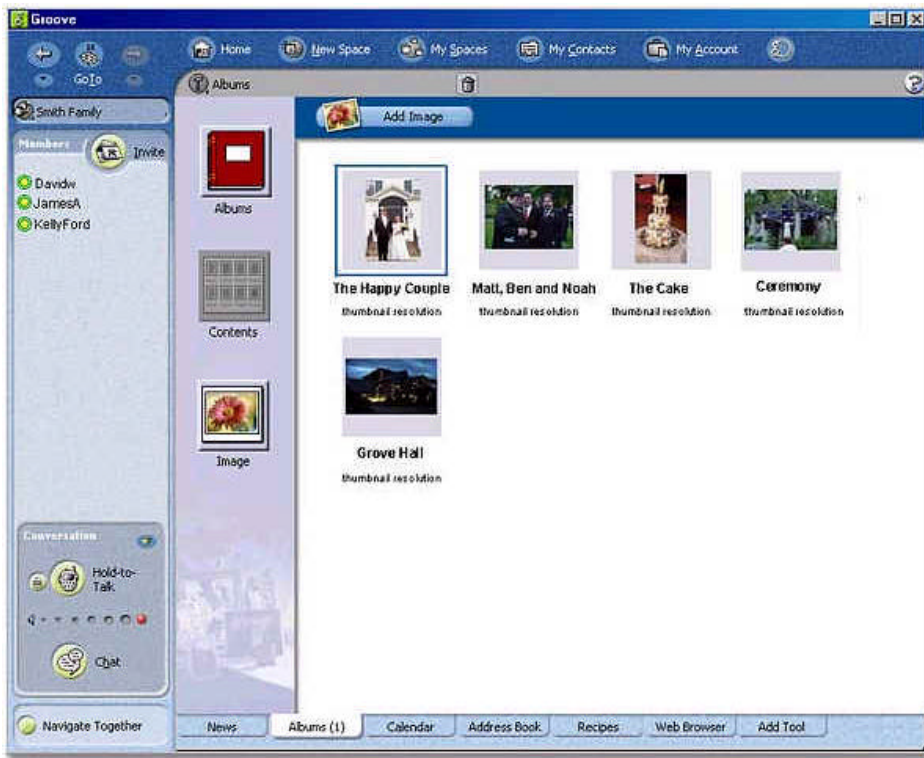
가

”

가

(groove_Family_Demo_0x.jpg)





4.

P2P

. 가 가

가 (Word) (Excel)

MS

MS가

.Net

XML

(America Online)

(Instant Messaging)

가

95

2 (Windows 95 Service Pack 2)

(Macintosh)

PC

P2P가

49

가

P2P

P2P

가

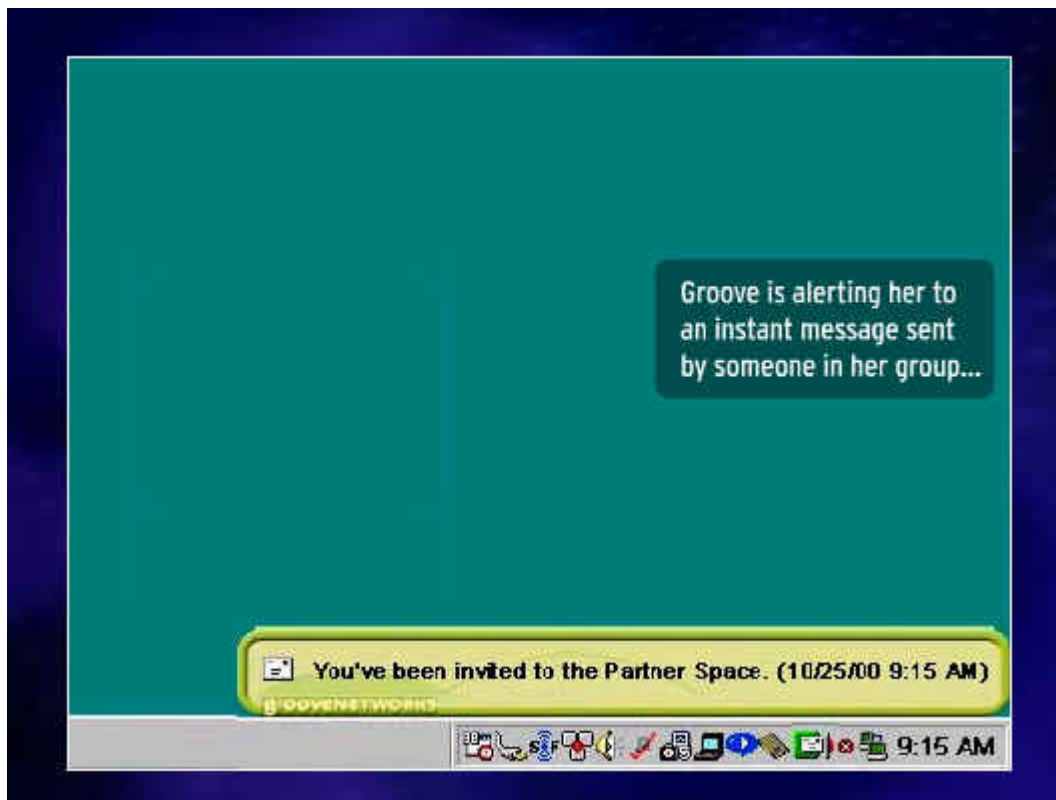
가

21

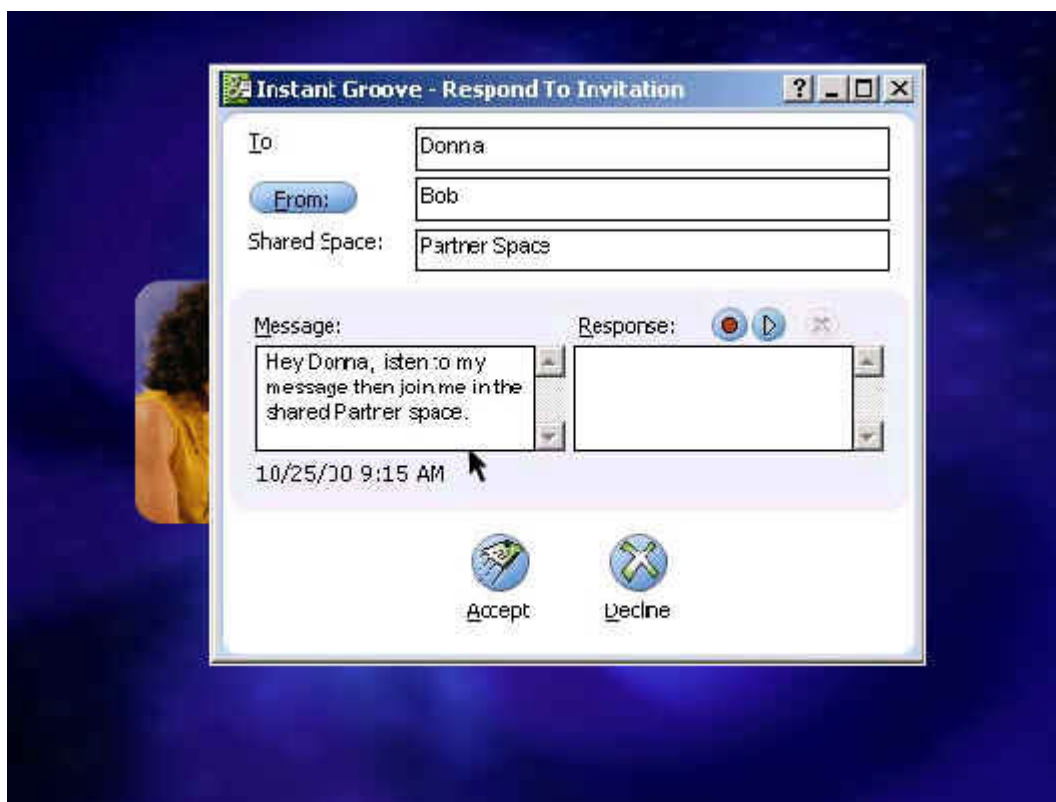
: KBS WorldNet NewYork

IT Trend in USA

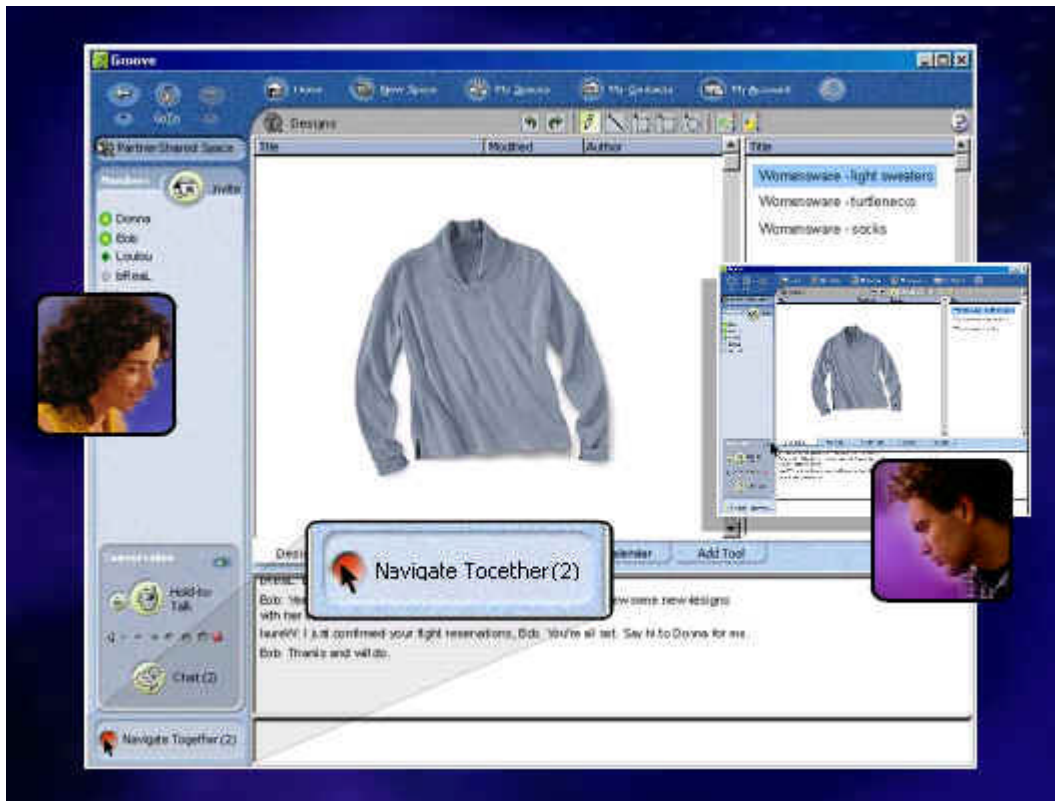
invite



response message



talking



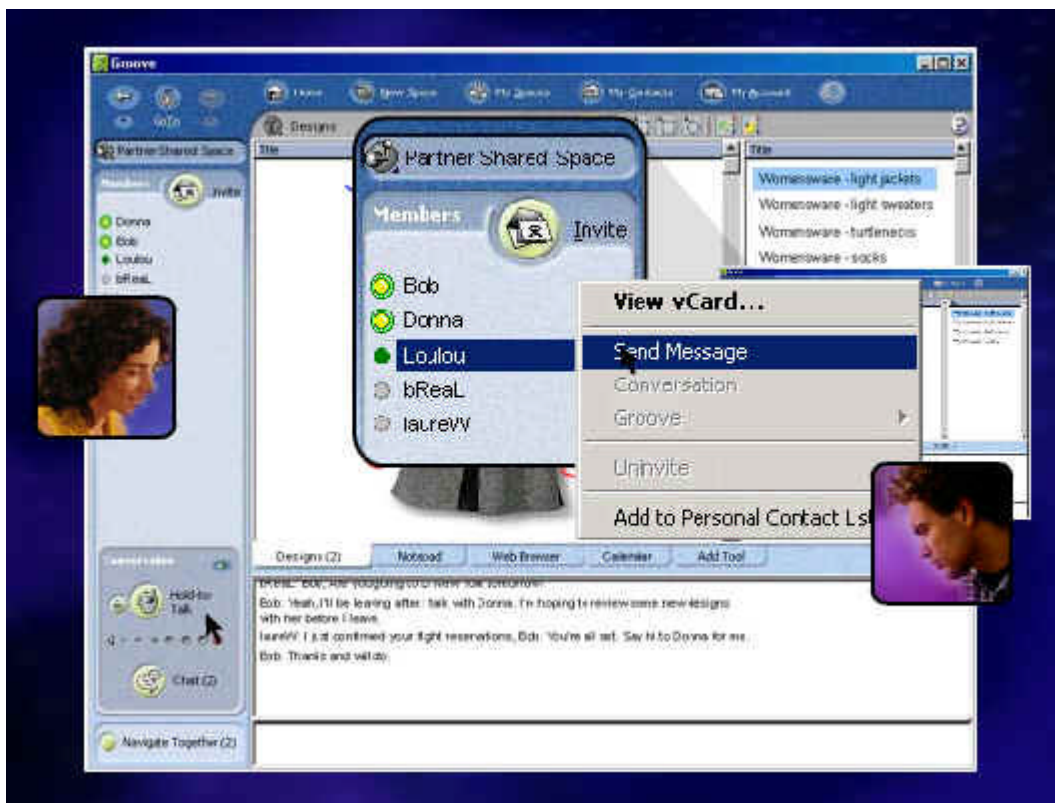
web surfing



scheduling



invite someone



meeting

